

BIRCH CREEK OUTFITTERS

Birch Creek Outfitters has been in operation for over 30 years, with the current owners in their 11th year of ownership. The area consists of approximately 110 square miles of the Bitterroot Selway Wilderness, in Idaho. There are 3 main camps in the back country (Wahoo, Indian Lake and East Moose) and 2 approved spike camp locations, (Jeanette and Shortridge).

The current owners concentrate on the Fall Big Game season (bow and rifle) including Elk, Deer and Moose. Bear and mountain lion are hunted in separate seasons. There are 500 use days with room for expansion if needed to include Spring bear hunts. Summer use is unlimited with all camps being approved for use during the Summer season. Roaming trips are also acceptable.

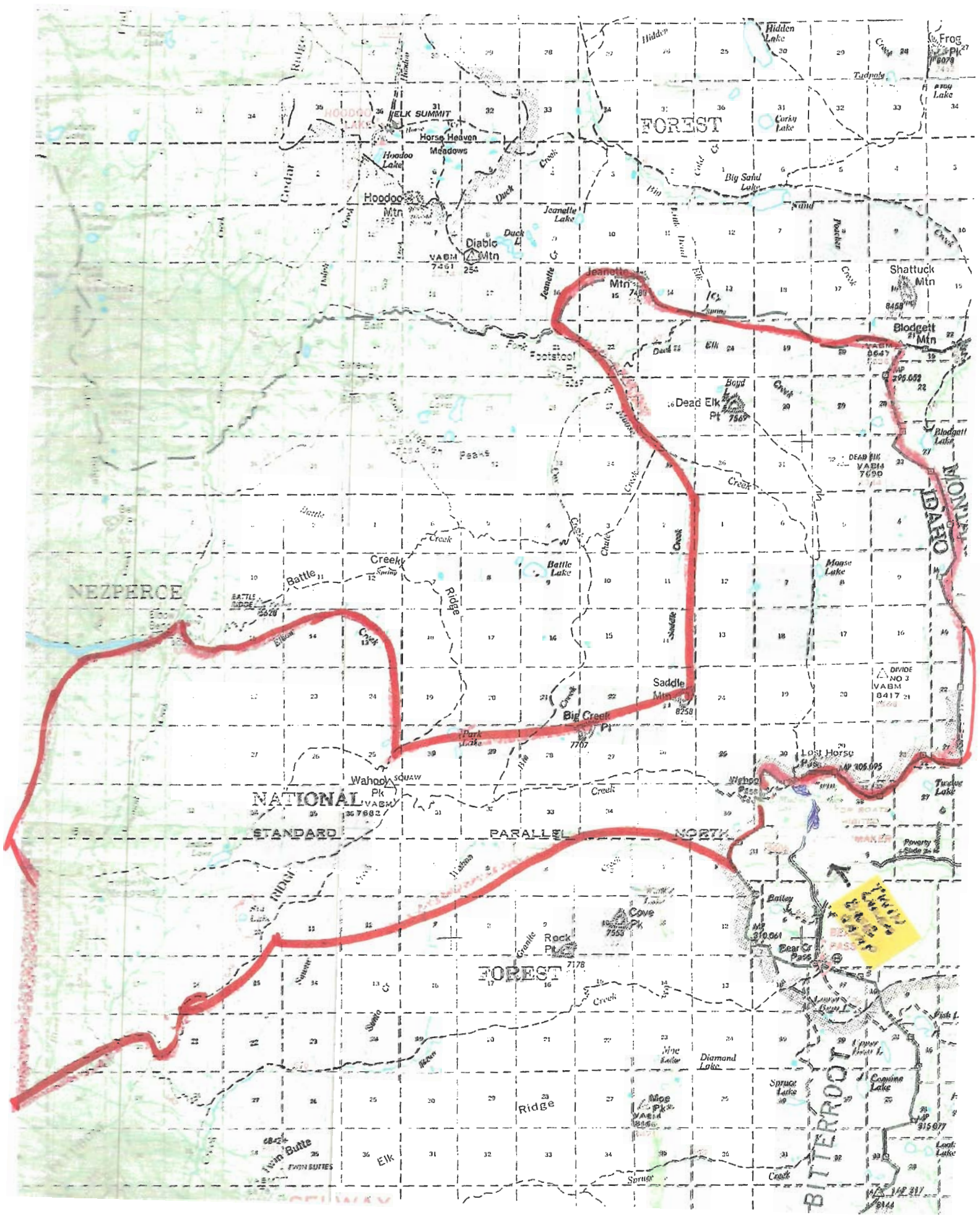
The current owners are continuing to operate the business as usual, and the equipment and stock are being maintained. In the 11 years the success rate and opportunity rate has remained high, and of course a lot depends on the weather.

Additional documents are maps of the area, and inventory list. The business is currently listed at the asking price of \$239,900 and the owner will carry back \$100,000 on a contract, (on approval of buyers credit).

Please call if you would like additional general information. If there are technical question concerning the operation of the business, I will put you in touch with the owners.

Sincerely,


Kay Wilson
406-370-5220



BIRCH CREEK OUTFITTERS

EXHIBIT A

